

Creating a Custom Column Label

PypeServer has several important default column labels such as “Customer”, “Job”, “Material Type,” etc. To allow greater flexibility, and to customize PypeServer to meet organizational needs, you can now create custom column labels.

Open System Settings by clicking the gear icon:



Click on the Custom Labels tab:

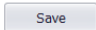
1. Select an available label.

2. Name the label by typing it in the value box.

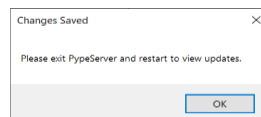
3. Select Tooltip located directly below the new label created. (A tooltip provides a short message seen while hovering the cursor over your label)

4. Type the tooltip message in the value box.

For both custom fields and tooltips, you may add user notes for future reference.

When finished, click the  button on the bottom of the screen.

You will be prompted to restart Pypeserver:



Use the new labels in Designs & Parts, Scheduled Parts, and Nesting.

Job	New Label	Spool Sheet
	New Label ToolTip	header
		4 Drop Header

For information on how to add the newly created column labels to PypeServer, please refer to training video “Managing Lists in PypeServer” under the title “Using Table Features”